

7 7 Years
Product Warranty
UK Only

2 2 Years
On-Site Warranty
Main-land UK Only



Trent III Sensor Dim

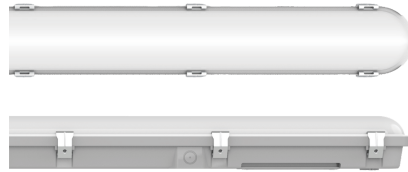
07832 TRE32F18-SCT/S

Trent III 2ft sensor non-corrosive 10-18W CCT/W switchable

- Switchable CCT (3000/4000/6000k)
- High efficiency up to 160lm/W
- 4 Switchable wattages for each model
- Optional plug-in Emergency or ON/OFF sensorDALI
- Durable and rugged IK10 polycarbonate construction
- DALI-2 DT 6, DSI, switchDIM, corridor FUNCTION V2 option available
- Corridor sensor option available
- Suitable for through-wiring
- Opal diffuser

Overview

Trent III has a range of lengths from 2 ft to 6 ft. All are CCT switchable with settings for 3000k, 4000k and 6000k as well as wattage switchable with 4 settings allowing for customization in situ.



IP65



General Information

Ambient Temperature Range (°C)	-20°C to 50°C
IK Rating	IK10
IP Rating	IP65
Nominal Lifetime (h)	50,000 h
Protection Rating	Class I
Installation Area	Internal and External

Technical Summary

Product Code	TRE32F18-SCT/S
Input Voltage Supply	220-240Vac 50/60Hz
Settable Wattages	10W, 12W, 15W, 18W
Driver Code/Part number	Merrytek MCLxxC-NPS
Power Factor	0.90
Settable Colour Temperatures	3000k, 4000k, 6000k
SDCM of CCT	<6
CRI	82
Dimmable	N
Flicker	<1%
Maximum Efficiency	141 lm/W
Maintained Luminous Flux	350 lm
L80B10 Lifetime (h) @Ta 25 °C	54,000 h
Nominal Lifetime (h)	50,000 h
Weight	0.9Kg
Dimensions (L x W x D) (mm)	668x99x82



Kosnic Lighting



KosnicUK



KosnicLightingUK



KosnicUK

Tel: 01635 523 713

Email: sales@kosnic.com

Kosnic.com

7 7 Years
Product Warranty
UK Only

2 2 Years
On-Site Warranty
Main-land UK Only



Trent III Sensor Dim

07832 TRE32F18-SCT/S

Optional Gear

Product Code	Description	Type
BEM303	Batten UEM 3W emergency module for battens	Emergency Module
BEM303/ST	Batten UEM 3W Self test emergency module for battens	Self-test Emergency Module
PIR-SID	P30 Exterior PIR Sensor Side-Mount with RMT-UNI control	PIR Sensor

Accessories

Product Code	Description	Type
SUS-BTN04	Suspension for Niva Kasai Kennet Milo Congo Trent Avon Indus, 4 wires included, max. 1m drop	Suspension Kit
SUS-BTN04/25	Batten Suspension Kits 2.5m length, 4 wires included	Suspension Kit

Overview

Trent III has a range of lengths from 2 ft to 6 ft. All are CCT switchable with settings for 3000k, 4000k and 6000k as well as wattage switchable with 4 settings allowing for customization in situ.



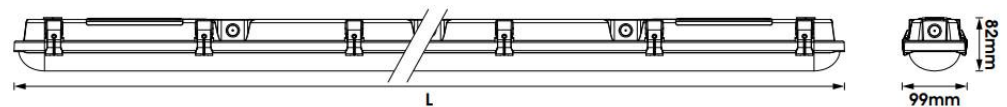
IP65



General Information

Ambient Temperature Range (°C)	-20°C to 50°C
IK Rating	IK10
IP Rating	IP65
Nominal Lifetime (h)	50,000 h
Protection Rating	Class I
Installation Area	Internal and External

Rated Power (W)	Current (mA)	CCT (k)	Luminous Flux (lm)	Power Factor
10	48	3000 Warm White	1300	0.87
10	48	4000 Cool White	1400	0.87
10	48	6000 Day Light	1300	0.87
12	56	3000 Warm White	1500	0.9
12	56	4000 Cool White	1700	0.9
12	56	6000 Day Light	1500	0.9
15	69	3000 Warm White	1900	0.92
15	69	4000 Cool White	2100	0.92
15	69	6000 Day Light	1900	0.92
18	82	3000 Warm White	2200	0.93
18	82	4000 Cool White	2500	0.93
18	82	6000 Day Light	2200	0.93



Product Code	Length(mm)
TRE32F18-SCT	668
TRE34F35-SCT	1270
TRE35F48-SCT	1570
TRE36F62-SCT	1870



Kosnic Lighting



KosnicUK



KosnicLightingUK



KosnicUK

Tel: 01635 523 713

Email: sales@kosnic.com

Kosnic.com

7 Years
Product Warranty
UK Only

2 Years
On-Site Warranty
Main-land UK Only



Trent III Sensor Dim

07832 TRE32F18-SCT/S

Overview

Trent III has a range of lengths from 2 ft to 6 ft. All are CCT switchable with settings for 3000k, 4000k and 6000k as well as wattage switchable with 4 settings allowing for customization in situ.

Built-in Sensor used in	TRE32F18-SCT/S, TRE34F35-SCT/S, TRE35F48-SCT/S, TRE36F62-SCT/S
Sensor Type	Microwave
Input Voltage	12Vdc
Working Mode	5V PWM dimming
HF System	5.8GHz ± 75MHz ISM band / 0.5 mW max
Stand-by Power	<0.5 W
Protection	IP20
Transmitting power	≤0.5 mW
Mounting Height	6m (Max)
Detection Area Radius	≥4m (mounting height 3m, moving speed 0.3m/s) (100% / 50%)
Detection Angle	90° (wall mounted) / 130° (ceiling mounted)
Hold time	5s / 5min / 10min / 30min
Daylight sensor	30Lux / 50Lux / 100Lux / 150Lux / Disable Daylight Priority: (ON 30 / 50 / 100Lux); (OFF 150 / 200Lux)
Stand-by DIM level	10% / 30%
Stand-by time	0s / 3min / 10min / +∞ (+∞ = Daylight priority mode)



General Information

Ambient Temperature Range (°C)	-20°C to 50°C
IK Rating	IK10
IP Rating	IP65
Nominal Lifetime (h)	50,000 h
Protection Rating	Class I
Installation Area	Internal and External



Kosnic Lighting



KosnicUK



KosnicLightingUK



KosnicUK

Tel: 01635 523 713

Email: sales@kosnic.com

Kosnic.com