

# WiZ Pro Bridge Box

07301 WIZBRB/D

## WiZ Pro Phase-cut Bridge Box 220-240V Dimmable

- Easy wireless dimming and scheduling for energy saving and convenience
- WiZ Click feature enables easy installation
- Connecting to Wi-Fi for cloud-based control and remote access. No gateway needed
- In-built relay on and off control & 1-10V range dimming (1-10V model)
- Trailing edge phase-cut dimming (phase cut model)
- Suitable for both independent and built-in usage
- Energy metering feature with 10% accuracy
- Max 300W output load



### Overview

The Kosnic WiZ Pro 1-10V bridge box can work with 1-10V constant current LED drivers to enable dimming features. Advanced design of the bridge box helps to build a reliable and standardized connected lighting system with different functionalities from simple wireless dimming to cloud based operations.



### General Information

Ambient Temperature Range (°C)	-20°C to 50°C
IP Rating	IP20
Nominal Lifetime (h)	50,000 h
Protection Rating	Class II
Installation Area	Internal

### Technical Summary

Product Code	WIZBRB/D
Input Voltage Supply	220-240Vac 50/60Hz
Nominal Lifetime (h)	50,000 h
Dimensions (L x W x D) (mm)	88x41.2x28
UEM/EME Input Voltage	198-264



Kosnic Lighting



KosnicUK



KosnicLightingUK



KosnicUK

Tel: 01635 523 713

Email: [sales@kosnic.com](mailto:sales@kosnic.com)

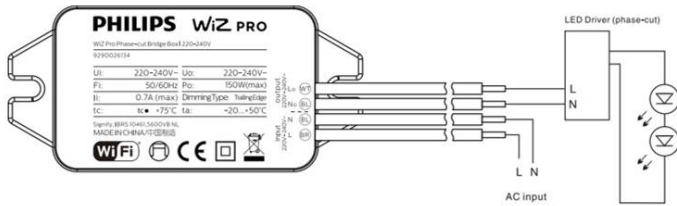
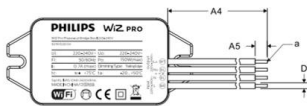
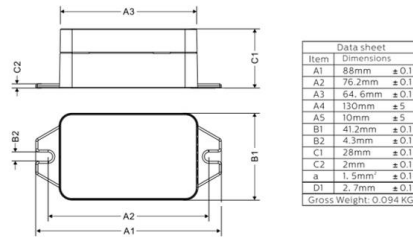
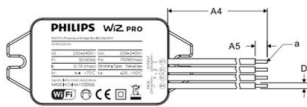
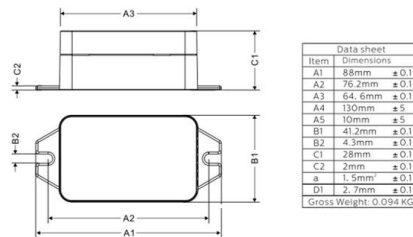
[Kosnic.com](http://Kosnic.com)

# WiZ Pro Bridge Box

07301 WIZBRB/D

## Overview

The Kosnic WiZ Pro 1-10V bridge box can work with 1-10V constant current LED drivers to enable dimming features. Advanced design of the bridge box helps to build a reliable and standardized connected lighting system with different functionalities from simple wireless dimming to cloud based operations.



1. Disconnect the mains supply.
2. Use accessory screws to fix the product through the U-shaped grooves on both sides.
3. Connect the output live and neutral of the bridge box into the LED driver input terminals.
4. Connect the 1-10v control wires into the LED driver input terminals.
5. Connect the input live and neutral supply from the bridge box to the mains supply.

## General Information

Ambient Temperature Range (°C)	-20°C to 50°C
IP Rating	IP20
Nominal Lifetime (h)	50,000 h
Protection Rating	Class II
Installation Area	Internal



Specification Item	Definition	Remark
A	220V-240V - L - White	Live output
B	220V-240V - N - Blue	Neutral output
C	220V-240V - N - Blue	Neutral input
D	220V-240V - L - Brown	Live input
E	Push button	Reset button
F	LED light	LED light



Indicator	Value
LED indicator	Blue Color, indicating the pairing status and other procedures
Push button	Tact switch, for pairing and factory reset

Tel: 01635 523 713

Email: sales@kosnic.com

Kosnic.com

Kosnic Lighting

KosnicUK

KosnicLightingUK

KosnicUK